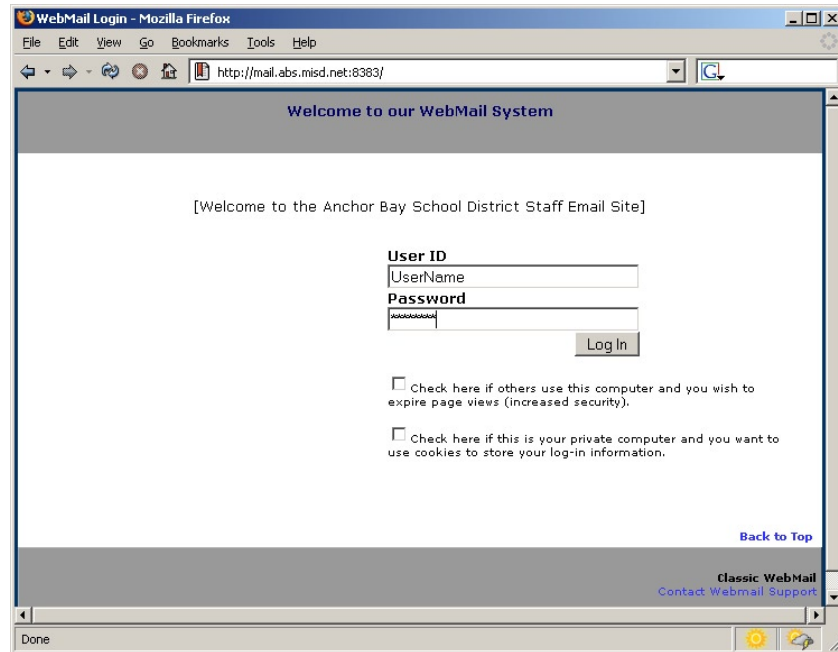


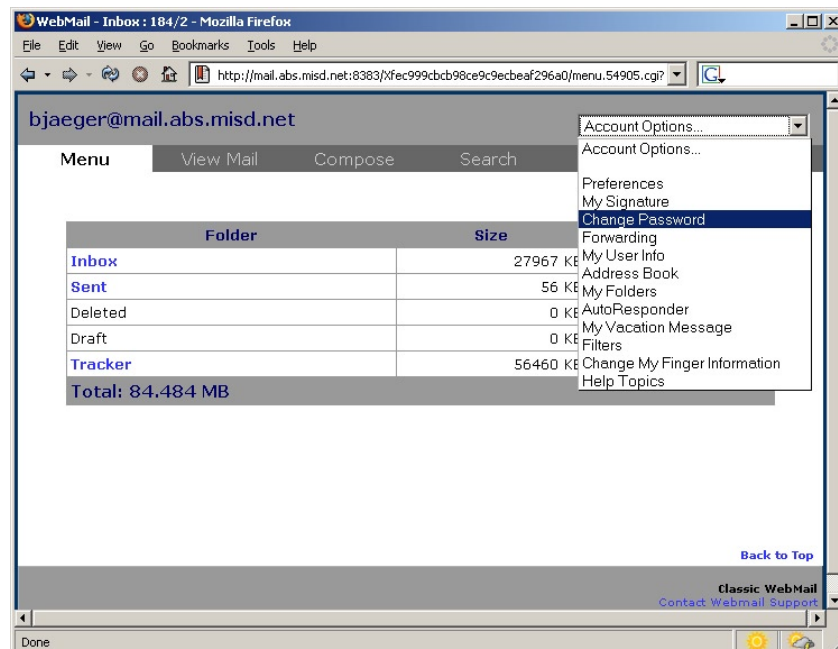


## Change your E-mail Password

1. Open up Internet Explorer or Firefox and go to **http://mail.abs.misd.net:8383**.  
Logon with your current USERID and PASSWORD.



2. Click open the “Account Options...” menu and choose “change password” as below:





3. Enter your information as shown and click save. This is important! Do not forget to click Save.

A screenshot of a Mozilla Firefox browser window titled "Change Password - mail.abs.misd.net". The address bar shows the URL "http://mail.abs.misd.net:8383/xfec999cbcb98ce9c9ecbeaf296a0/chgpass.57202.c". The page content includes a "Go Back" link, a note that "Passwords may be from 3 to 30 characters long and cannot contain spaces.", and three input fields labeled "Old Password:", "New Password:", and "Confirm Password:". A "Save" button is located below the "Confirm Password" field. At the bottom right, there are links for "Back to Top", "Classic WebMail", "Contact Webmail Support", and "Support". The browser's status bar at the bottom shows "Done".

4. That's it, you're done. Click on the Menu button at the top to get back to your e-mail folder listings.