

### Tuition Preschool

Preschool provides young children with hands on active learning experiences that help prepare them to be successful learners in Kindergarten.

**Ages:** 3 or 4 years old by Dec. 1, 2008

**Hours:** 2 ½ and 3 hour classes

**Days:** 2 or 3 days per week

**Locations:** Early Childhood Center,  
Naldrett Elementary

**Registration:** \$35 Non-refundable

**Cost:** Monthly tuition fee

### Early Childhood Developmentally Delayed

ECDD is a preschool program for children identified with significant special needs. Assessment and evaluations determine enrollment.

**Ages:** 3 yrs old by December 1<sup>st</sup> of the current school year

**Days:** Monday - Friday

**Weeks:** School Year

**Cost:** FREE

**Location:** Throughout the district

**Eligibility:** Certified Special Education

**Call Student Services at (586) 949-4513**

### School Readiness Program (Blossoming Fours)

A **FREE** 4 yr. old preschool program for children who are identified as “at risk”. Additional emphasis is placed on literacy and Pre-Kindergarten Readiness skills.

**Qualifications:**

4 years old by Dec. 1, 2008  
Live in the Anchor Bay District & meet at least 2 identified risk factors.

**Hours:** 2 ½ hours per day

**Days:** Monday – Thursday

**Location:** Early Childhood Center

**Cost:** FREE

**Parent Involvement:**

2 Home Visits, 2 Parent/Teacher Conferences & classroom activities.

**Transportation:**

School bus transportation is available. Transportation routes determine morning or afternoon class placements.



### Teens & Tots & Career Technical Education Program

**Teens and Tots** is a career technical education preschool program for High School students studying the field of Education or Early Childhood. High School students work directly with the children in the early childhood classroom at the Anchor Bay High School under the careful direction of a qualified preschool teacher and high school teacher.

Children enrolled in this program enjoy more one on one interaction and small group experiences with the assistance of the additional teen “teachers”

**Ages:** Children must be 3 or 4 on/before December 1<sup>st</sup> of the current school year.

*(Independently toilet trained)*

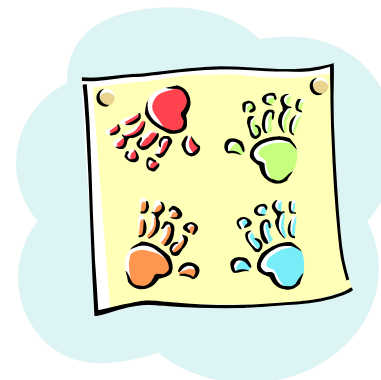
**Location:** Anchor Bay High School

**Days:** Monday – Thursday

**Hours:** Morning & Afternoon classes available

**Registration:** \$35 Non-refundable

**Cost:** Monthly Tuition



### Full Day Preschool & Child Care

This program addresses both the needs of the developing preschool child, as well as the needs of the full-time working parent.

**Ages:** 3 – 5 years old  
(Independently toilet trained)

**Hours:** 6:00a.m. – 6:00p.m.

**Days:** Monday – Friday

**Locations:** Early Childhood Center

**Registration:** \$35 Non-refundable

**Cost:** Weekly Tuition

### Teeny, Tiny, Toddler Tars

A parent/child interactive play group with an emphasis on social skills and pre-literacy skills. Finger-plays, songs, projects, games, snacks and stories will fill this one hour class. Each child will leave class with their own copy of the Book of the Week. Parents will leave with parenting tips on child development and extension activities to do at home.

**Ages:** 16 months – 33 months

**Hours:** 1 hour per week

**Location:** Early Childhood Center

**Cost:** Call for fee

**Books:** 1 each week

**Times:**

T	10:15 – 11:15am
Th	10:15 – 11:15am
F	8:30 – 9:30am
F	10:45 – 11:45am
F	12:30 - 1:30pm

## Basic Principals of a Quality Early Childhood Program

- Meeting the individual needs of the child.
- Providing a safe, nurturing environment where children can learn at their own pace.
- Children learn through active hands on, real world experiences.
- Enabling children to be successful learners.
- Children are encouraged to plan their day, carry out their plans and recall their activities.
- Fostering the collaboration & communication between home and school.
- Recognizing active play as the foundation for young children's learning.



## Early Childhood Programs

Each of the Anchor Bay Early Childhood Preschool Programs, with the exception of ECDD program, implements either the High Scope Educational Approach, or the Creative Curriculum. ECDD students follow specific Individual Development Plans. Activities in all programs are designed to align with the Anchor Bay Preschool Core Curriculum and the Anchor Bay Kindergarten Curriculum.



## Anchor Bay School District

The Anchor Bay School District is dedicated to meeting the diverse educational needs of all its students, preschool through 12th grade. This brochure describes the Early Childhood programs that are offered in our district. Each program has specific requirements for attendance, yet each follows the highest quality of standards for best practices for young learners. We hope that this will assist you in finding the right preschool program for you and your child.

## Mission Statement

Anchor Bay Schools, in partnership with the community, will produce lifelong learners, who respect diversity, adapt to change, and function as responsible citizens.



The Anchor Bay School District is a non-profit, equal opportunity employer/program. Auxiliary aids and services are available upon request to individuals with disabilities. It is the policy of the Anchor Bay School District that no person, on the ground of race, color, religion, sex, national origin, age, disability, political affiliation or belief, shall be excluded from participation in, denied the benefits of, or subject to discrimination in any activity.



## Board of Education

Steve Mittelstadt, President  
Ron Osborne, Vice President  
Michael LaFeve, Secretary  
Paul Bemis, Treasurer  
Robert Bidlingmaier, Trustee  
Heather Bade, Trustee  
Charles Medley, Trustee

Leonard A. Woodside, Superintendent  
Gail Eckstein, Director Elem. Education

# Anchor Bay School District

\* \* \* \*

## Early Childhood Programs

### A Preschool Program for every child



Early Childhood Center  
52680 Washington St.  
New Baltimore, MI 48047  
586-716-7862

## Home of the Tiny Tars

Barb Healey, Supervisor

2008 - 09